



# Meet the teacher 2024-25

Miss Saeed – 3S

Ms Chaudhry - 3F

# Personal Details

Ensure the **office** has up-to-date details for your child.

- Address (*if your address has changed, please provide a recent proof of address document*)
- Emergency contact numbers – two numbers needed
- Email address
- Medical information – New medication see Mrs. Louca

# School Uniform



## WEMBLEY PRIMARY SCHOOL UNIFORM LIST

\*Indicates uniform that can be purchased within the school



No jewellery must be worn in school. If your child has pierced ears small studs are permitted, however these MUST be removed by your child for PE lessons. In addition to the items listed below, children will also need a PE bag and Book bag, both of which are available to purchase within the school. Girls School

### Uniform – Reception, Key Stage 1 and Key Stage 2

#### Girls School Uniform – Reception, Key Stage 1 and Key Stage 2

Winter Uniform	Summer Uniform
Grey / Black skirt, pinafore dress or trousers White polo shirt or white cotton shirt School sweatshirt or cardigan* School tie (optional)* Black shoes or black trainers Black hijab (optional)	Red and white summer dress OR Grey / Black short trousers and white polo shirt Black shoes or black trainers School sun hat*

#### Boys School Uniform – Reception, Key Stage 1 and Key Stage 2

Winter Uniform	Summer Uniform
Grey / Black trousers White polo shirt or white cotton shirt School sweatshirt or cardigan* School tie (optional)* Black shoes	Grey / Black short trousers White polo shirt or white cotton shirt Black shoes School sun hat*

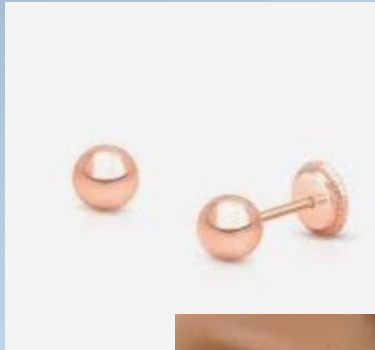
\*Hijab's must be black



# Jewellery

For safety, no jewellery is the best option.

We allow:



Small stud earrings



Compulsory religious jewellery



Red, simple hair accessories

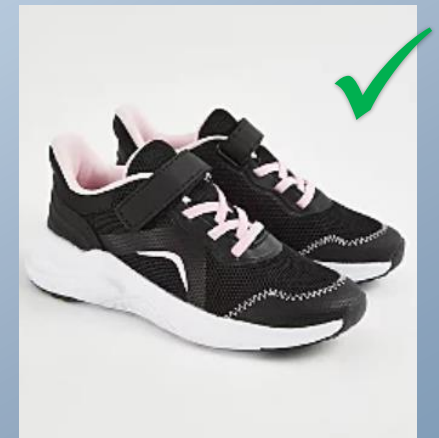
# PE Uniform



**No hoodies**

**No football tops**

**No blades or studs trainers**



# PE

- 3S PE = Monday & Tuesday
- 3F PE = Tuesday & Friday
  
- Children need to wear their PE kit to school.
  - House Team t-Shirt or white t-shirt
  - Black Jogging bottoms, leggings or shorts
  - Trainers
  - School jumper

# Things your child needs to bring

- Do not bring a bulky backpack as it is unsafe and a hazard.
- Children do not need to bring a pencil case from home. All equipment will be provided.
- Bring a waterproof bag that can hold your child's home learning books (A4 size) and their reading book, which can fit on the back of the chair.
- Please bring a labelled water bottle from home.
- A **healthy** and **nut-free** snack eg. Fruit, vegetable



# Attendance and Punctuality

- It is vital that your child comes to school **every day** and on time.
- Soft start begins at **8:35 am**.
- Registers close at **8.50** (*Teaching starts promptly and your child will be marked late if they arrive after this time.*)
- Please ensure you are collecting your children on time at **3.30 pm**.



# Reading

- Children in Year 3 will be expected to read for at least **15-20** minutes every day.
- Most books will be a colour-banded book which is matched to their reading assessments.
- An adult needs to sign their child's reading record every night to show that they have read to an adult.
- Children's book bands are determined upon performance in class and on reading assessments.
- If children are reading below age related expectations, they may be reading a phonetically decodable book.
- Reading records **must** be signed by an adult and brought in **daily**.

# Spellings


- Spellings for 3S – Monday
- Spellings for 3F – Friday
  
- Make sure children are writing sentences linked with their spelling.

# Home Learning

- Daily Reading – Banded Books (15-20 minutes per day)
- Spellings – given out every Wednesday for a test on **Tuesday**.
- Autumn 1 Term Home Learning Challenge – all tasks **must be** completed by the last Monday of the half term.
- Homework will be given out on Tuesday and must be handed in on Monday.
- Compulsory Maths and English homework in red home learning books.

*\*Homework Books will be assigned later in the year.*

[Year 3 - Wembley Primary School](#)




**Year 3 Home Learning Autumn 1**

Please complete all three challenges Monday 16th October. Learning is to be submitted on google classroom or in your red home learning.

---

**Human life cycle**



Look at the stages of the human life cycle above and complete the following:

1. What stage are you? .....

2. What stage is your teacher? .....

Complete the following:

3. Circle the age when you become a teenager.

4                      30                      13                      11

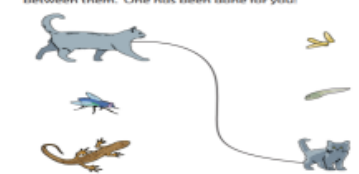
4. Write **one** thing that toddlers can usually do which newborn babies are unable to do.

.....

**Science: Young animals**

Complete the following:

1. Match the animal to its young by drawing lines between them. One has been done for you.



Complete the following:

1. A young cow is called a .....

2. A young dog is called a .....

---

**Religion and Worldviews:**

Circle the religion and the followers that match with the important person, **Jesus**.


Muslims	Christians	Hindus
Christianity	Hinduism	Islam

Circle the religion and the followers that match with the important person, **Siddhattha Gotama**.

Muslims	Christians	Hindus
Christianity	Hinduism	Islam

Explain why **Jesus** and **Siddhattha Gotama** are important people.

---



**Super Power of Looking**

You are going to analyse the Renaissance piece of art and discuss the points below with your parent. You can submit answers on Google classroom or in your red book. Also write what your parent has said.

This painting is called '[The Adoration of the Kings](#)' (1510-1515).

1. What do you think is going on here?
2. Who or what does the artist want us to look at first?
3. How are the kings identified in the painting?
4. Besides the human figures, is there anything else in the painting?

---

**Compulsory Homework—Maths Fluency Focus**

**Week 1:** Write **all** of the number bonds to 10. Write the number bonds to 100. What do you notice about the pattern?

**Week 2:** Add 10 to the following numbers: **2, 37, 44, 68, 76, 81**. what do you notice? Is there a pattern? Now add 100 to each of the numbers. Is the pattern the same/different? Explain.

**Week 3:** Practice counting **forwards** in 2s from the number **3**. Count **backwards** in 2 from **50**. Which sequence are the numbers odd numbers?

**Week 4:** Partition these numbers into **tens and ones**: **98, 63, 47, 74, 89, 36**. Write the numbers in order from **smallest to largest**. Which numbers are odd numbers? Which are even numbers? Draw these numbers on a number line.

**Week 5:** Name all of the shapes that have 4 sides. What is a shape with 5 sides called? And 7 sides? Write a list of all the 3-d shapes you know. Describe them using maths vocabulary learned in Year 2.

**Week 6:** Count forwards in 5's. Write all of the multiples of 5 up to 100/50. Are these numbers multiples of 5: **17, 25, 30, 89, 93**? Explain how you know.

For further information regarding your child's learning, please visit our school website.

About 3,110,000 results (0.48 seconds)

<https://www.wembleyprimary.co.uk>

**Wembley Primary School: Home**

We have a wonderful learning environment. A large number of outdoor spaces surround the school building. We have a nature garden, that all children regularly ...


**Calendar**  
Sports Event School Holidays Inset Day Parent Event Pupil Event ...

**Contact Us**  
East Lane, Wembley, HA9 7NW ... Email: admin ...

**Staff**  
Wembley Primary School. East Lane, Wembley, HA9 7NW | Tel ...

**Parents**  
Wembley Primary School. East Lane, Wembley, HA9 7NW | Tel ...

[More results from wembleyprimary.co.uk »](#)



Peace Pharmacy  
A4088

See photos See outside

**Wembley Primary School**

Website Directions Save

Primary school in Wembley, England

**Address:** East Ln, Wembley HA9 7NW

**Hours:** Opens soon · 8AM ▾

**Phone:** 020 8904 3725

[Suggest an edit · Own this business?](#)



**WEMBLEY PRIMARY SCHOOL**

PART OF THE WEMBLEY SCHOOLS FEDERATION

GOVERNORS LOGIN

About Us | News | Curriculum | Safeguarding | Parents | Community | Contact Us | Buy Uniform Here | Wellbeing

Newsletters | Value Awards | Events | Wellbeing News

EYFS | Year 1 | Year 2 | Year 3

Year 4 | Year 5 | Year 6

Year 6

Scroll Down

If you have a question or need to contact us, please email:  
[learning@wembleyprimary.brent.sch.uk](mailto:learning@wembleyprimary.brent.sch.uk)

# Appointments to see your child's teacher

- If you need to discuss something, please come and speak to us when you collect your child at the end of the day.
- If you are going to need a longer amount of time, then please arrange an appointment via the school office or with the teacher at collection time.
- Appointments with a class teacher in the morning need to be before 8:30am or after the children have been dismissed at 3:30pm.
- Updating you on your children's progress – we will do this through our parents meeting and reports.
- If you have concerns, please do come and discuss with us.

# After School Clubs

- A list of After School clubs will be available in the next 2-3 weeks. Children will only be able to **attend one session per week**.
- The booking will go live on **Parent Pay at 5pm on the release day**. If a space is available, children will be given their 1<sup>st</sup> choice club then removed from any additional preferences.
- **Waiting lists** will be created if a club is over-subscribed. Additional spaces may be offered if available. You will be contacted from the school office, if a place becomes available.

# Trips



- A parent calendar of key dates will be released for each term term on our school website, under the parent's tab and parent school events calendar.
- Most trips will be **linked to areas of the curriculum** e.g. Science, History, Geography.
- There will also be **local trips** eg. Library, Religious buildings, local area walks.
- Curriculum trips will usually **incur a fee**. Teachers will inform parents of trips and costs in advance which must be paid by the date stated in the letter via ParentPay. ParentPay payment also acts as consent. If payment is not made, we do not have consent to take children on these visits.
- **Parent volunteers** are encouraged and will be selected randomly before the trip. We can only take a **limited number** of adults on each trip. This includes school staff.
- Teachers will inform parents if they have been chosen.

# Religion and Worldviews Trips

- Educational visits to places of worship are a fundamental **part of the curriculum**.
- Purpose = embed knowledge and deepen understanding.
- Children **WILL NOT BE ASKED TO PARTAKE IN ACTIVITIES SPECIFIC TO ANY RELIGION. (E.g praying or worshipping).**
- Must speak to the Religion & Worldviews Lead (**Ms. Williams**) if you have any queries regarding a trip.



# Useful websites

- [BBC Bitesize](#)
- [The School Run](#)
- [Maths Is Fun](#)
- [Topmarks](#)
- [Education City](#)
- [TT Rock Stars](#)

A teal square containing the text "Any Questions?" in a white, cursive script. The text is centered and surrounded by a circular arrangement of white radiating lines, resembling a sunburst or a spotlight effect.

Any  
Questions?