



Year 4 Newsletter

**Summer 1
2025**

News

We hope you are all well and had a restful Easter break. This half term, children will start swimming lessons. Please look out for letters which will outline what your child will need for swimming. As we are getting closer to the multiplication assessment, it is imperative that children continue to practise their multiplication and division facts up to and including 12 X 12.

Literacy

Stories set in a historical setting

Stories set in a historical setting Children will study a book set in the Egyptian era. They will explore the descriptive language, compare the settings and write their own story set in the past. Help your child by researching the

Egyptians and watching videos about them together at home. BBC Bitesize—Egyptians is a great site



Art

This half term the topic will be 'people.' The children will be learning to draw human forms using a mannequin. They will be using different media to create tone. The children will be learning about the complementary colours from a colour wheel.

History

Children will be learning about the Windrush generation. They will delve into the Windrush generation and its significant impact on British society. They will learn about the arrival of the SS Empire Windrush in 1948, bringing Caribbean migrants to the UK and the experiences of those who made the journey.

[What is the Windrush Generation? | Finding My Family: A Windrush Special | Newsround \(youtube.com\)](#)

Music

Brent Music will continue to provide music lessons for the children. They will be performing body percussion patterns.

RE

We will be looking at the evidence of god in different religions.

Science

Our topic for this half term will be Living Things and their Habitats. We will be looking at what makes habitats suitable for different living things. We will be using our very own nature garden to observe the living habits of animals. We will also study how environmental changes impacts on the living thing.

Some of the vocabulary we will be using will include; Habitats, life cycles, pollution, organism, adaptation and micro habitats. Please learn the definition of these terms with your children.

The following website has some free resources.

[Living things and their habitats...tackle the tricky bits - Explorify](#)

Computing

Children will be learning about loops and repetitions. Children will be making loops and repetitions to create shape and pattern.

Maths

By the end of year 4, children need to know their multiplication and division facts up to 12. It is vital that children practise these everyday to reinforce this knowledge. Children will revisit decimals and time.

We will also be looking identifying names and properties of shapes.

Furthermore, children will use the maths skills taught this year to solve more complex problems. Practise telling time with your child by using an analogue and digital clock and include converting between 12-hour and 24-hour clock notation. <https://www.bbc.co.uk/bitesize/topics/zkh82hv/articles/zcmdwx>



P.E

PE - Children must come into school dressed in their PE kit ready for PE. Children will be developing their coordination and balance skills.

This term, the children will be engaging in swimming practice.

If you wish to discuss your child's progress an appointment can be made with us. We are available at the end of the school day at 3.30pm for short discussions. Please let us know the day before. Thank you Ms Adam (4W) Miss Ofosu (4P) Miss Riaz (4S) Ms Nagda (4F)

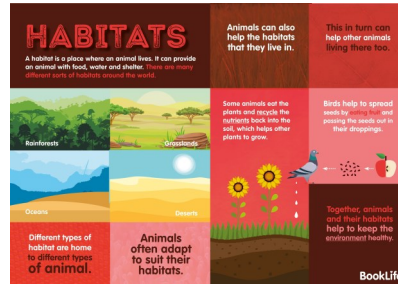


Year 4 Home Learning Summer 1

Please complete all three challenges Monday 19th May 2025. Remember to complete the weekly maths homework.

Science

Choose 3 habitats to research. Examples include forests, oceans, rivers and ponds. Create a poster to share your findings. Include pictures, diagrams and interesting facts.



History— 'Windrush'

We are learning about the Windrush generation this half term. Your task is to find out where your family comes from. • Make a note of different places your ancestors have travelled from to get to Wembley. • If you can, talk to them about their experiences before arriving here and any differences between their place of birth and Wembley.

Super Power of Looking

You are going to analyse the Renaissance piece of art and discuss the points below with your parent. You can submit answers on Google classroom or in your red book. Also write what your parent has said.

This is one of the lessons in The Superpower of Looking on history paintings. It focuses on William Holman Hunt's *The Lady of Shalott*, painted around 1886–1905.



1. How is the Lady of Shalott feeling at this moment in time? Does she look peaceful, relaxed, content? Troubled, busy, worried?
2. How do you know?
3. How has the character and identity of the figure in the painting been expressed?
4. Are there any other clues or symbols that tell us something about her personality or identity?

Compulsory Homework—Maths Fluency Focus

Week 1:

Shade the shapes to make one whole.



Complete the sentences for each diagram.

To make 1 whole, I shaded _____ equal parts.

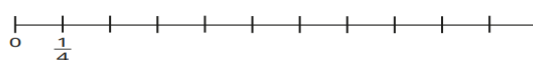
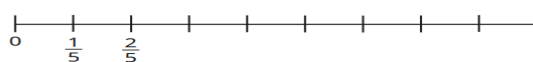
The fraction I shaded was _____

Complete the additions.

$$\begin{aligned} \blacktriangleright \frac{3}{4} + \frac{\square}{\square} &= 1 & \blacktriangleright \frac{3}{7} + \frac{\square}{\square} &= 1 & \blacktriangleright 1 = \frac{\square}{\square} + \frac{3}{10} \end{aligned}$$

Week 2:

Complete the number lines.



Fill in the missing numbers.

$$\blacktriangleright 4\frac{4}{5} = 4\frac{1}{5} + \frac{\square}{\square} \quad 4\frac{4}{5} = 4\frac{2}{5} + \frac{\square}{\square} \quad 4\frac{4}{5} = 4\frac{\square}{5} + \frac{1}{5}$$

Week 3:

$$\blacktriangleright 2\frac{6}{7} = 2\frac{1}{7} + \frac{\square}{\square} \quad 2\frac{6}{7} = 2\frac{3}{7} + \frac{\square}{\square} \quad 2\frac{6}{7} = \frac{\square}{7} + \frac{\square}{\square}$$

Week 4:

Sort the fractions into the table.

$\frac{3}{100}$	$\frac{3}{4}$	$\frac{3}{5}$
-----------------	---------------	---------------

$\frac{3}{50}$	$\frac{17}{20}$	$\frac{7}{20}$
----------------	-----------------	----------------

Fractions that are a small part of the whole	Fractions that are a large part of the whole