

## What I already know

There are similarities and differences between things that are living, dead, and things that have never been alive.

## What I will learn in this unit

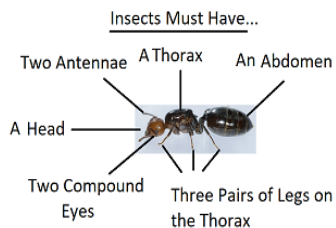
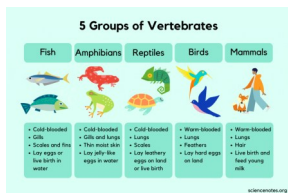
### Classification of living things

Living things include plants and animals.

All animals and plants can be grouped based on their similarities and differences.

### Animals

Animals are split into 2 main groups: vertebrates and invertebrates.



This is a pangolin. What group does it belong to? How can you tell?



Year 4

Autumn 1

## Group and classify Living things

### Science Focus: Biology



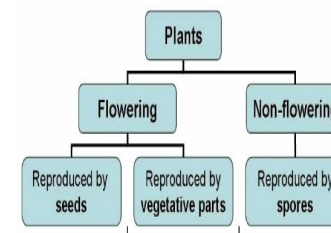
### Classification keys (Branching database)

A key is a set of questions about the characteristics of living things. Classification keys use sets of yes or no questions to help identify which group a living thing belongs to. They are also called branching database.

### Plants

Plants are split into 2 main parts: flowering and non-flowering.

| KEY VOCABULARY     |   |
|--------------------|---|
| Word               | Definition  |
| Backbone           | The row of bones that runs along the centre of the back—spine.                                |
| Life processes     | Basic functions performed by living organisms to maintain their life on earth.                |
| Exoskeleton        | An external supporting structure, such as the shell of a crustacean.                          |
| Invertebrate       | <b>Invertebrates</b> are animals that do not have an internal skeleton.                       |
| Warm blooded       | Animals that maintain a regular temperature.  |
| Sample             | A small amount of something to show what the whole of it may be like.                         |
| Vertebrate         | <b>Vertebrates</b> are animals with <b>backbones</b> as part of an <b>internal skeleton</b> . |
| Classify           | To put into groups according to similar features or characteristics.                          |
| Classification key | A system that places objects into groups using yes and no questions.                          |
| Cold blooded       | An animal whose body temperature changes with the environment it is in.                       |



| Plant Groups                                 |  |
|--|--|
| Plants can be put into one of two groups     | Flowering plants<br>Non flowering plants   |
| Flowering plants are made up of 4 groups     | <ul style="list-style-type: none"> <li>Grasses</li> <li>Cereals</li> <li>Garden shrubs</li> <li>Deciduous trees</li> </ul> |
| Non flowering plants are made up of 3 groups | <ul style="list-style-type: none"> <li>Algae</li> <li>Coniferous trees</li> <li>Ferns</li> </ul>                           |